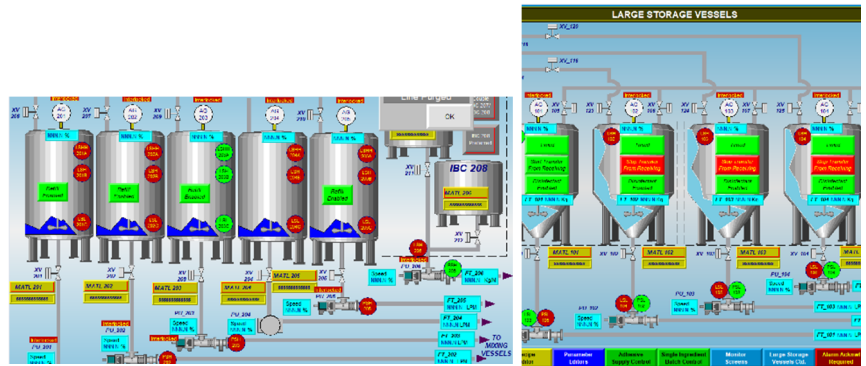


- **The problem:** This technical adhesive tape manufacturer sought to increase their current tank capacity to mix an expanded number of different adhesive glue recipes. They hired a mechanical contractor to install the new tanks, but the new tanks needed to be integrated into their current system to provide continuity throughout the entire manufacturing process.
- **The solution:** HighPoint worked with the mechanical contractor to ensure the right components were ordered and timing for installation and commissioning of the equipment was as seamless to the customer as possible.
- (4) tanks were installed- each 16' in diameter and 45' tall. HighPoint specified and procured all necessary automation components needed to integrate the new tanks.
- HighPoint engineered all electrical changes, integrated the new tanks and associated components into the existing system, and programmed the new recipes into the PLC to the customer's standards. The HMIs were set up to look and operate the same way they always had, eliminating potential confusion for operators.
- All electrical prints were updated with the changes that were made.

### The Hardware

- Rockwell Studio Logix Designer V28 PLC
- PyPlus 7 Performance 15" HMI
- 1756-L72 ControlLogix 5570 Controller



HighPoint offers comprehensive controls engineering solutions, specializing in the design, programming, integration, and support of automation systems. HighPoint works to repair, upgrade, and commission equipment based on the automation needs of our customers. From PLC and HMI systems to robotics and all automation equipment in between- **We're On It!**